

To view this email as a web page, go [here](#).

Yale *Physics*



Upcoming Events

Monday, May 18

4:00pm Molecular Biophysics & Biochemistry Special Seminar. Matt Simon, Yale University, "Insights into functional RNAs and regulated gene expression through enhanced nucleotide chemistry". via Zoom
<https://yale.zoom.us/j/97641304125>

Tuesday, May 19

3:00pm Mechanical Engineering & Materials Science Seminar. Multiple Presenters, Yale University, "COVID HASTE: Local Contact Tracing - Manual & Automated Approaches for Yale and New Haven" via Zoom:
<https://yale.zoom.us/j/92790008843>

[More events](#)

News



Danielle Speller (Postdoctoral Associate with Reina Maruyama) to be an Assistant Professor at John's Hopkins University

Danielle Speller has accepted a position as an Assistant Professor in the Physics and Astronomy Department at Johns Hopkins University. She will join the Physics Department in July 2020.

[More](#)



Meg Urry (Israel Munson Professor of Physics) has been elected a member of the FAS Senate

With 69% of eligible faculty voting, Meg Urry (Israel Munson Professor of Physics) has been elected a member of the Yale University Faculty of Arts and Sciences Senate representing the Sciences. Her term starts on July 1, 2020.

[More](#)



Pieter van Dokkum (the Sol Goldman Family Professor of Astronomy) has won a Graduate Mentor Award

Pieter van Dokkum (the Sol Goldman Family Professor of Astronomy) has won a Graduate Mentor Award from the Graduate School of Arts and Sciences.

[More](#)



Miles Waits (YC'2021 Physics major) wins an F. Wilder Bellamy Jr. Memorial Prize

Miles Waits (YC'2021 Physics major) in one of eight juniors to win an F. Wilder Bellamy Jr. Memorial Prize for 2020

[More](#)



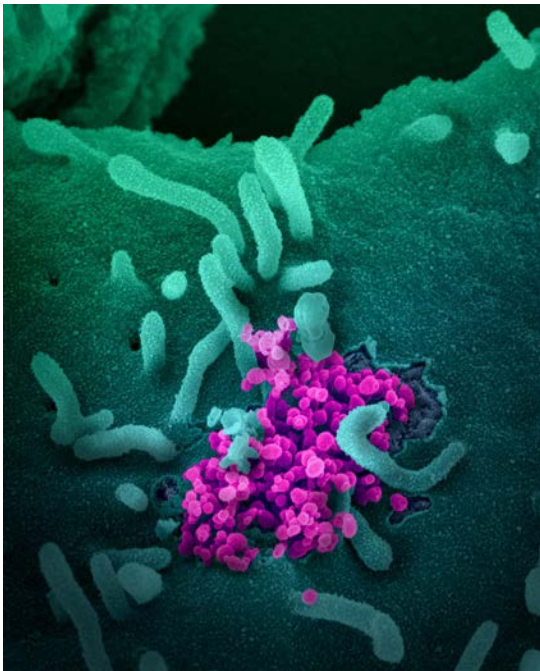
Elizabeth Ruddy (YC'2020 Physics (Int.) major) in Yale News (May 14, 2020)

Elizabeth Ruddy (YC'2020 Physics (Int.) major) is one of 14 students featured in Yale News for the class of 2020.

[More](#)

COVID-19 Update – May 13th Update

At this point in time access to physics buildings is still limited to **personnel who are authorized for critical maintenance activities**. If you are part of this group, you have been notified and face masks have been issued to you from the university. Everyone else is expected to stay off campus. While the State of Connecticut and parts of the country are working towards a re-opening in the coming days, the current access restrictions to campus remain for now. If you have a need to retrieve items from campus please contact one of our building contacts.



Further information on Yale's response.

More

Community



Climate and Diversity Committee

If interested in joining the CDC, please contact Helen Caines, Chair of CDC. You may contact the whole committee at physics-cdc@mailman.yale.edu



[Visit our Website](#) | [Contact Us](#)

For further information, or to contribute to the newsletter, please send email to [Daphne Klemme](mailto:Daphne.Klemme).

This email was sent by: Department of Physics, Yale University
P.O. BOX 208120, New Haven, CT, 06520-8120 United States

This email was sent by: Yale University
P.O. BOX 208109, New Haven, CT, 06520-8279 US

[Update Your Preferences](#) **[Privacy Policy](#)**