

To view this email as a web page, go [here](#).

# Yale *Physics*

---



## Upcoming Events

Wednesday, June 24-Wednesday, July 1

**9:00am** Yale Quantum Institute Event. YQI x Qiskit - Quantum Hackathon: Community Summer Jam. Registration opens on June 17, 2020.

[More events](#)

## News

### **Summer Marx Science and Social Science Library Virtual Workshops**

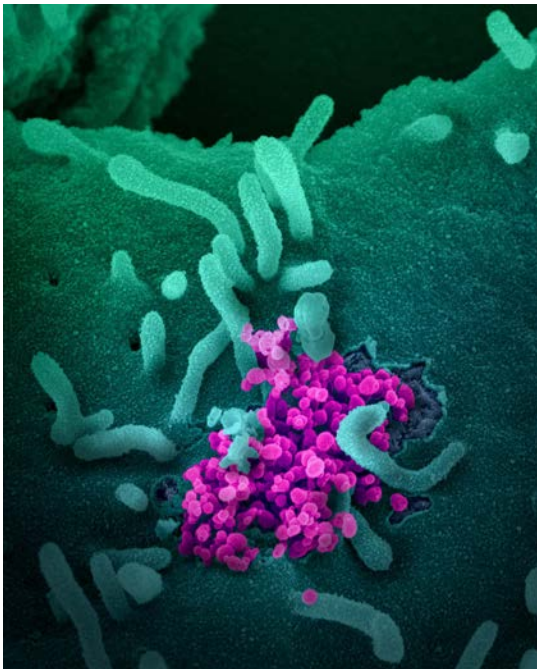
The Marx Science and Social Science Library (formerly called CSSSI) has come up with our summer workshop schedule. Due to COVID-19, we are experimenting with a more robust summer workshop program.

YALE LIBRARY ONLINE



If you have feedback on our offerings and there's something else you would like to see from the Marx Library (or the greater Yale University Library of which we are a part), please let us know!

[More](#)



### **COVID-19 Update – Yale News on COVID-19**

This [page](#) gathers stories about the COVID-19 crisis published on YaleNews. For official updates and guidance, visit Yale's COVID-19 information page.

[Further information on Yale's response.](#)

[More](#)

## **Community**



## Climate and Diversity Committee

Montrai Spikes' [article in Science magazine](#) this week discusses how in his first year as a TA he struggled with being taken seriously. He tried dressing and speaking more like a "professional scientist", and while students initially seemed to be taking him more seriously, he noticed that by "reinforcing the misconception that the only way to succeed is through cultural assimilation" he was alienating black students. As we reflect on how to improve the climate in our department and University, its worth reflecting on the question Montrai raises at the end of his article. Who is more professional? "Is it the man who wears button- down shirts or the person who is knowledgeable in their field? Is it the woman with straight hair or the person who leads productive discussions? A true professional doesn't have a prescribed appearance."

*If interested in joining the [CDC](#), please contact [Helen Caines](#), Chair of CDC. You may contact the whole committee at [physics-cdc@mailman.yale.edu](mailto:physics-cdc@mailman.yale.edu)*



---

[Visit our Website](#) | [Contact Us](#)

*For further information, or to contribute to the newsletter, please send email to [Daphne Klemme](#).*

This email was sent by: Department of Physics, Yale University  
P.O. BOX 208120, New Haven, CT, 06520-8120 United States

This email was sent by: Yale University  
P.O. BOX 208109, New Haven, CT, 06520-8279 US

[Update Your Preferences](#)   [Privacy Policy](#)