

To view this email as a web page, go [here](#).

Yale *Physics*



Upcoming Events

No events this week

[More events](#)

News

Welcome Mike Sas (Postgraduate Associate pending degree working with Helen Caines)

Welcome to Mike Sas who comes to us as a postgraduate associate pending degree working with Helen Caines. He is an experimental physicist interested in studying the nature of heavy-ion collisions at the LHC using the ALICE experiment. His focus is on understanding the microscopic dynamics of the quark



gluon plasma, mainly by studying the photons that are radiated by or originate from this droplet of hot QCD matter.

[More](#)



Joshua Burt defends graduate thesis, “Large-Scale Organization of Microcircuit Specialization in Human Cortex”

On July 29, 2020, Josh Burt successfully defended his thesis, “Large-Scale Organization of Microcircuit Specialization in Human Cortex” (advisor John Murray).

[More](#)

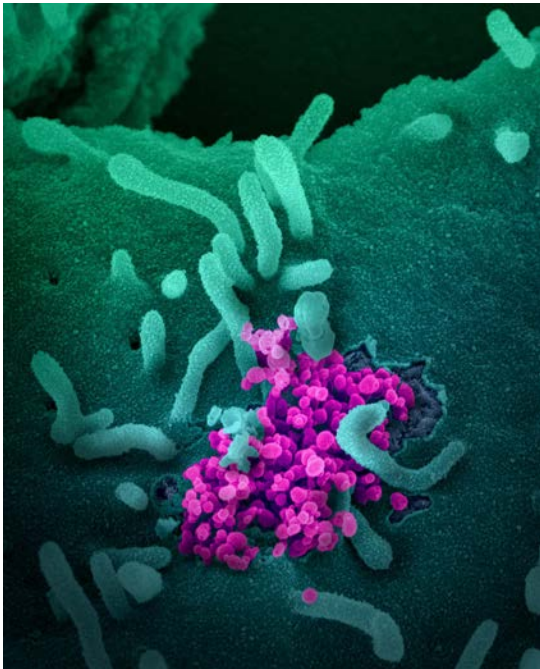
Supraja Balasubramanian defends graduate thesis, “A Differential Cross-Section Measurement of Muon Neutrino-Induced Charged Current Neutral Pion Production in MicroBooNE”

On July 21, 2020, Supraja Balasubramanian successfully defended her thesis, “A Differential



Cross-Section Measurement of Muon Neutrino-Induced Charged Current Neutral Pion Production in MicroBooNE” (advisor Bonnie Fleming).

[More](#)



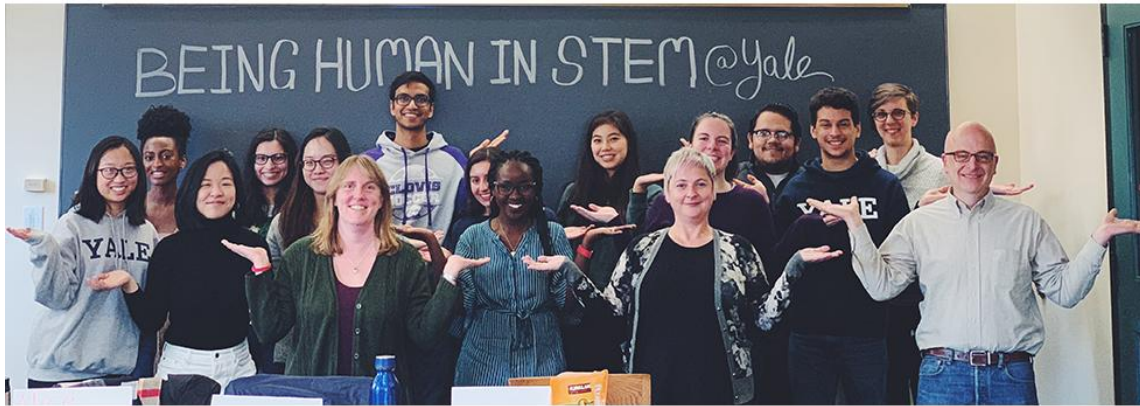
COVID-19 Update – August 7th update

July 31, 2020: Updated from the University COVID-19 Coordinator on helping you to understand the requirements and process for performing a daily health check for symptoms prior to coming to campus.

- [COVID-19 Workplace Guidance website](#)
- [Yale College COVID-19 Announcements and FAQs](#)
- [Graduate School for Arts and Sciences 2020-2021 Academic Year FAQs for Graduate Students](#)
- [Further information on Yale's response.](#)

[More](#)

Community



Climate and Diversity Committee

Good luck to all of you dealing with power outages, etc.

If interested in joining the [CDC](#), please contact [Helen Caines](#), Chair of CDC. You may contact the whole committee at physics-cdc@mailman.yale.edu



[Visit our Website](#) | [Contact Us](#)

For further information, or to contribute to the newsletter, please send email to [Daphne Klemme](#).

This email was sent by: Department of Physics, Yale University
P.O. BOX 208120, New Haven, CT, 06520-8120 United States

This email was sent by: Yale University
P.O. BOX 208109, New Haven, CT, 06520-8279 US

[Update Your Preferences](#) [Privacy Policy](#)