

# Walking from Sloane Physics Lab to Wright Lab/Wright Lab West/EAL

Walk out the front door of Sloane Physics Lab, cross the driveway, and enter Sterling Chemistry Lab.



Once inside Sterling Chemistry Lab, go up the main staircase.

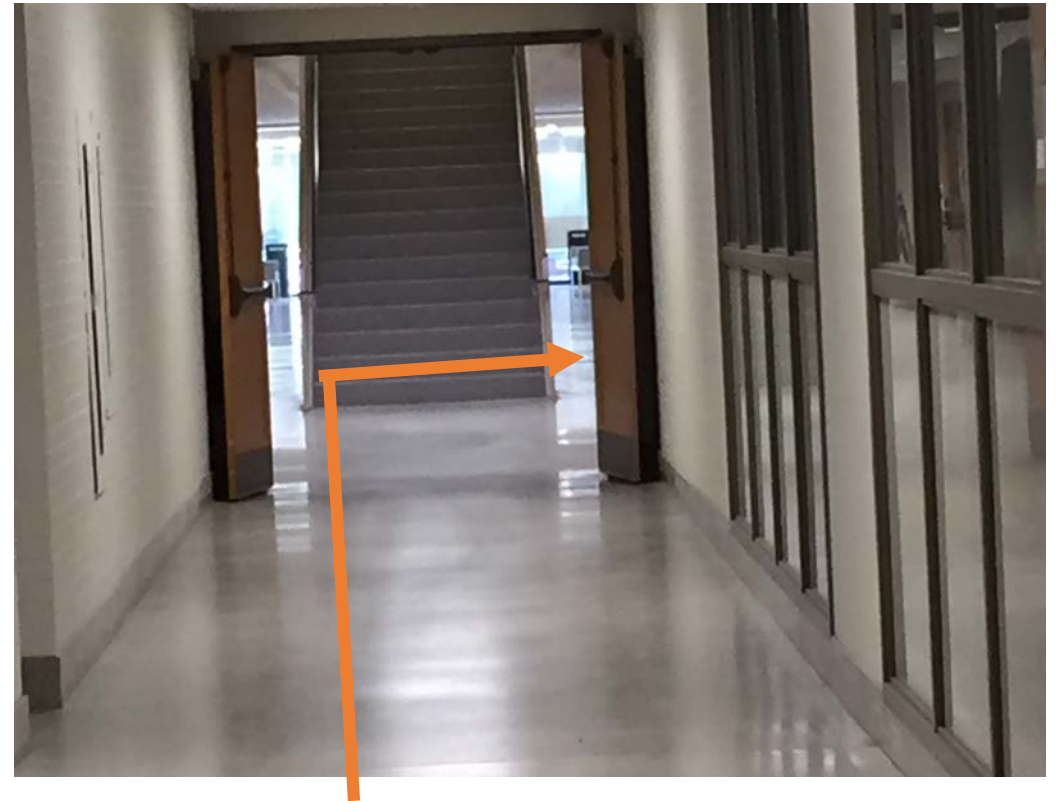




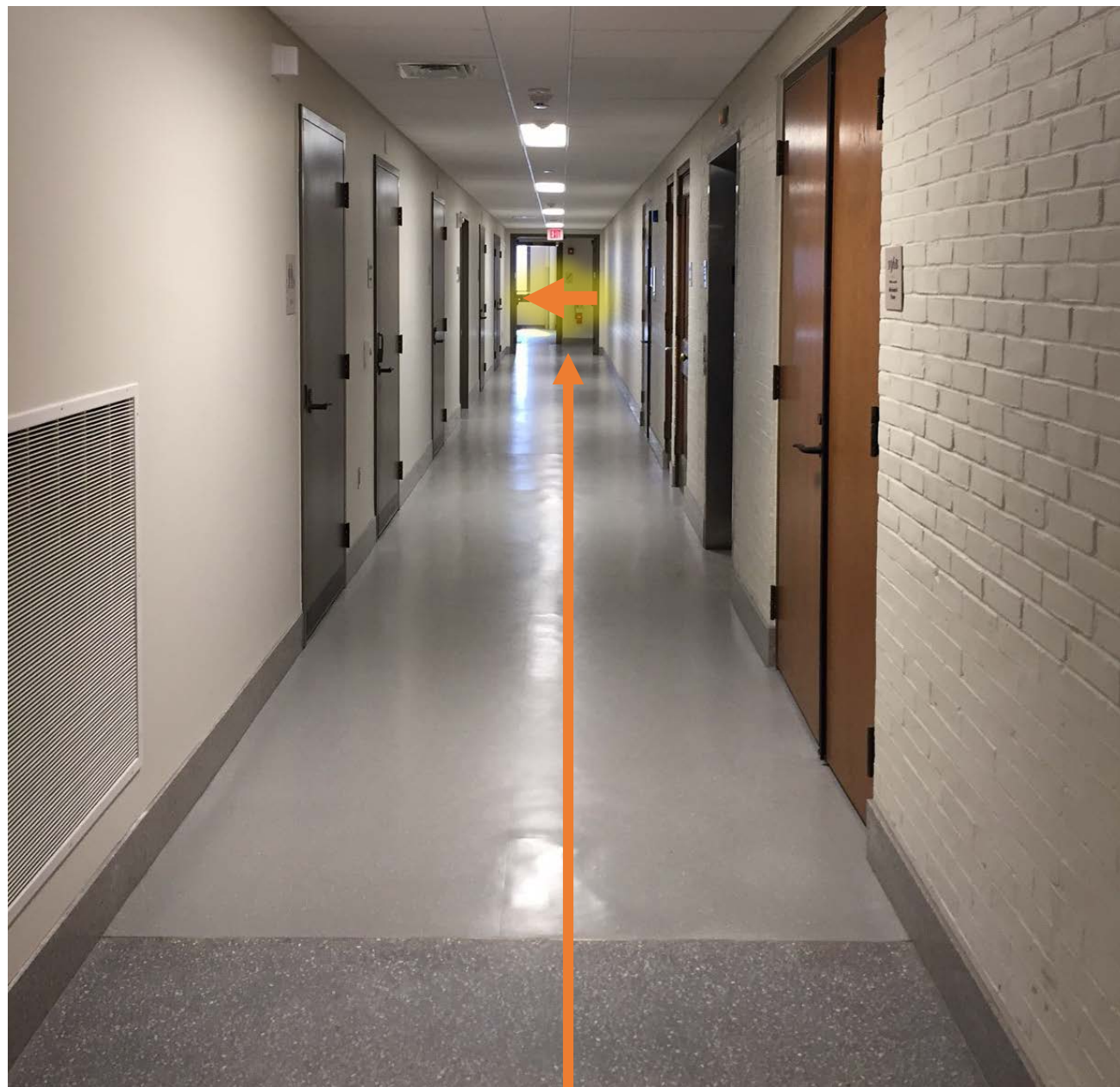
**At the top of the stairs, continue straight down corridor...**



**turning RIGHT past the double doors, just before the stairs.**



Walk to end of hall and turn LEFT at hallway junction

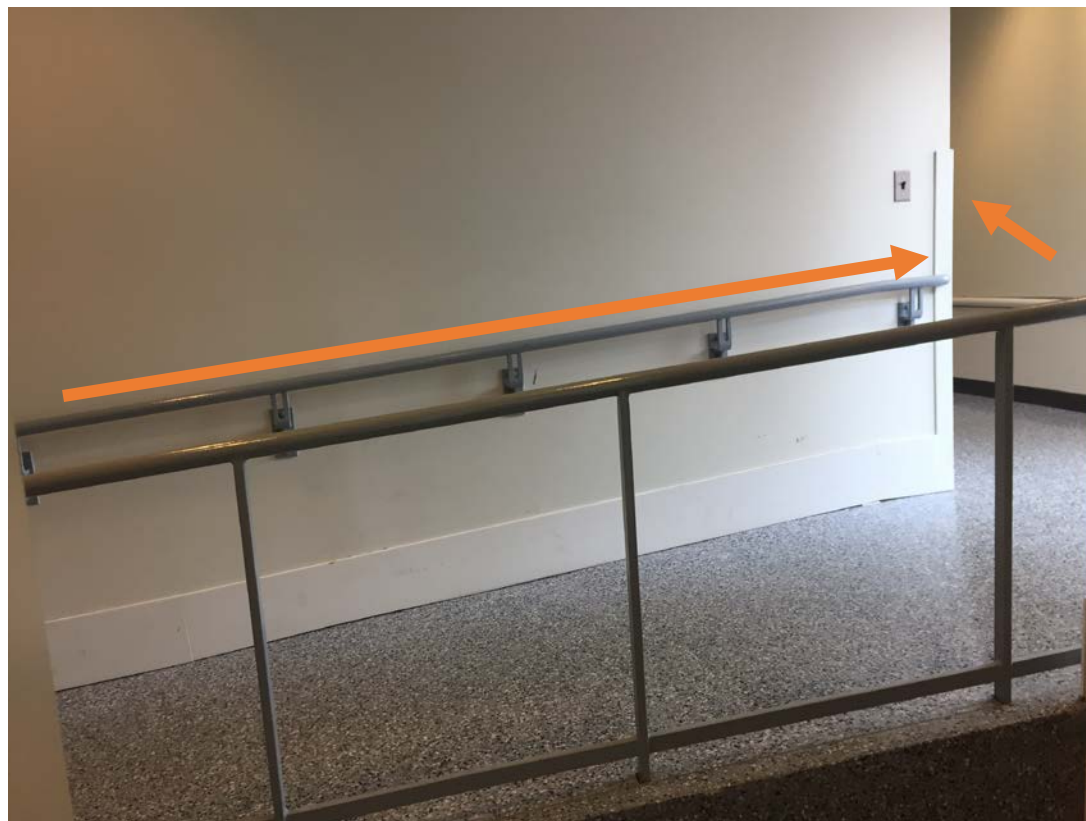


After turning left, walk about 20 feet and turn RIGHT to ramp leading to Bass Building





Walk up ramp and continue down hallway to  
elevator alcove near the end

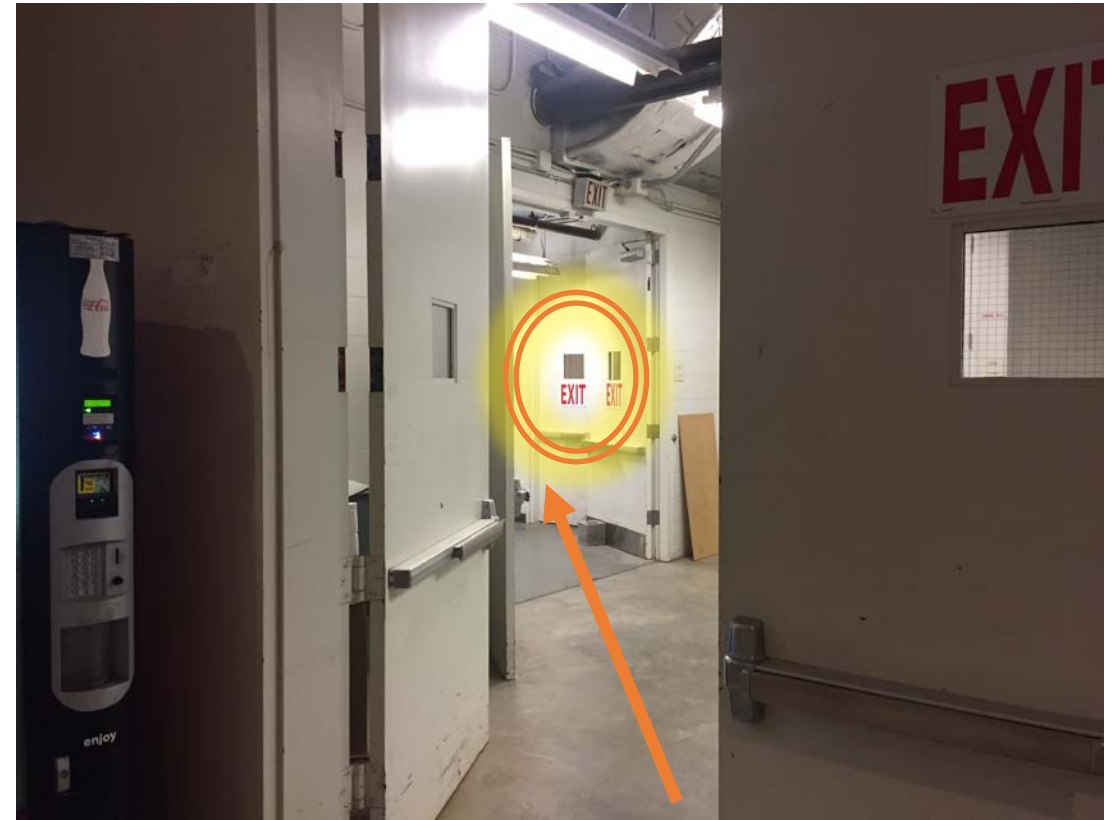
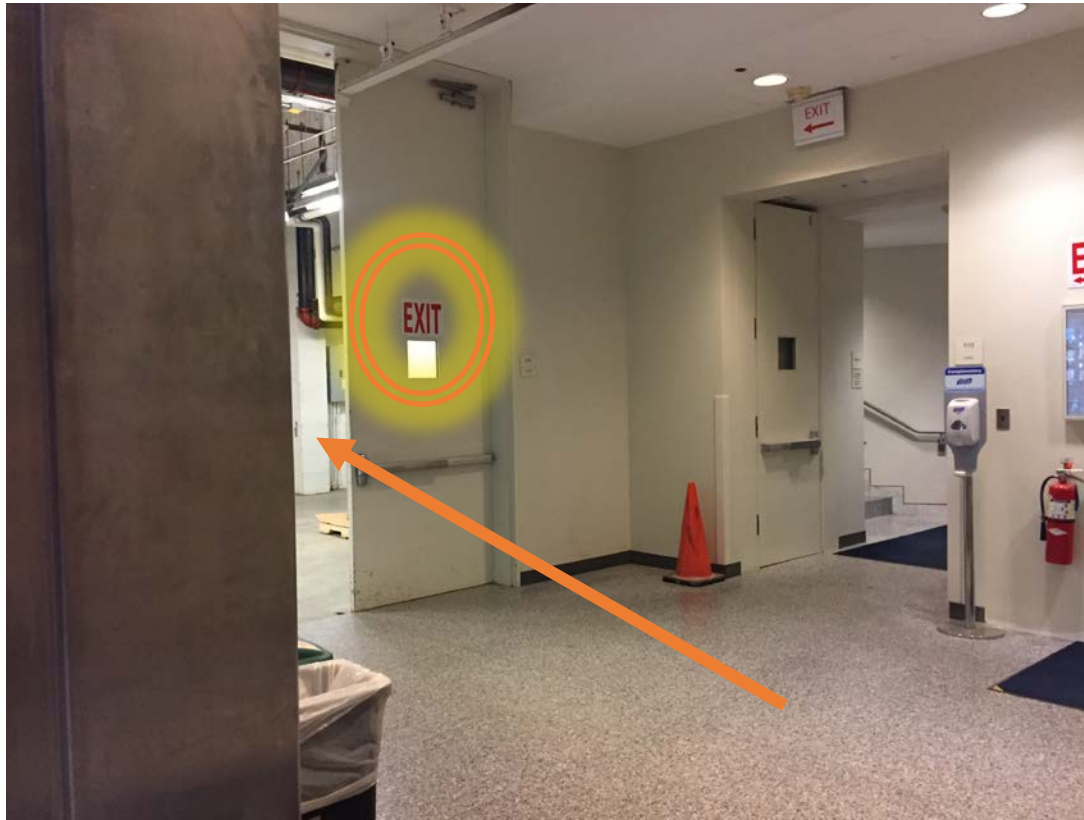




At elevator alcove, use  
either elevator to go  
DOWN to the FIRST floor

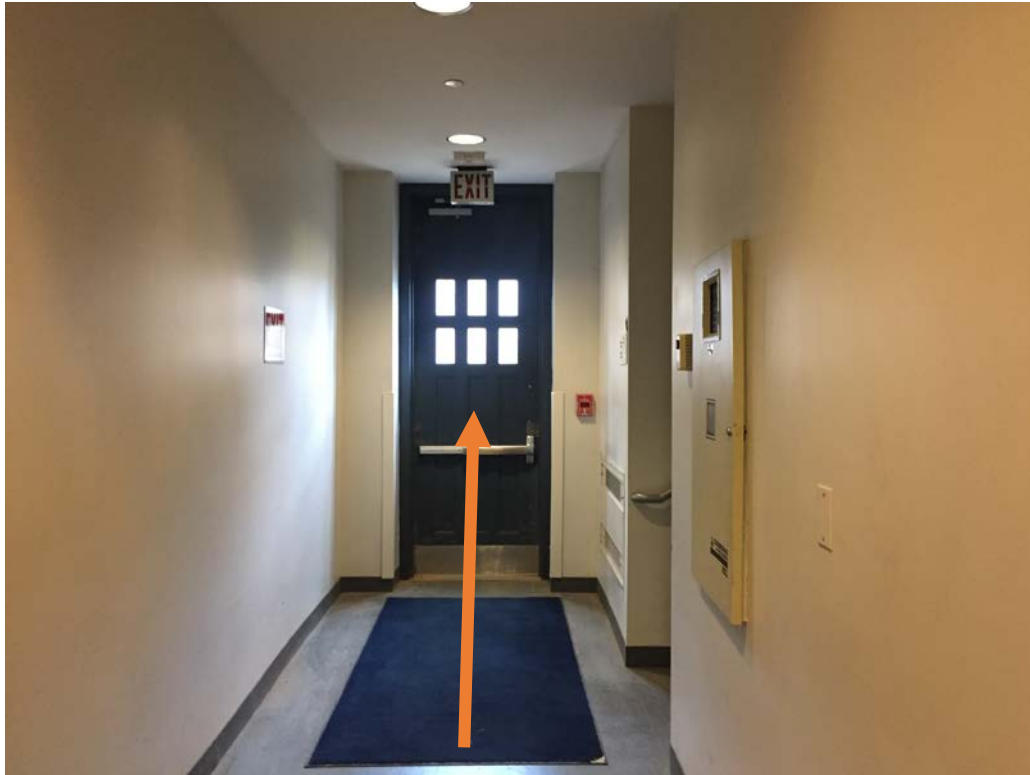


Exit elevator at first floor foyer and follow exit signs through  
LARGE double doors

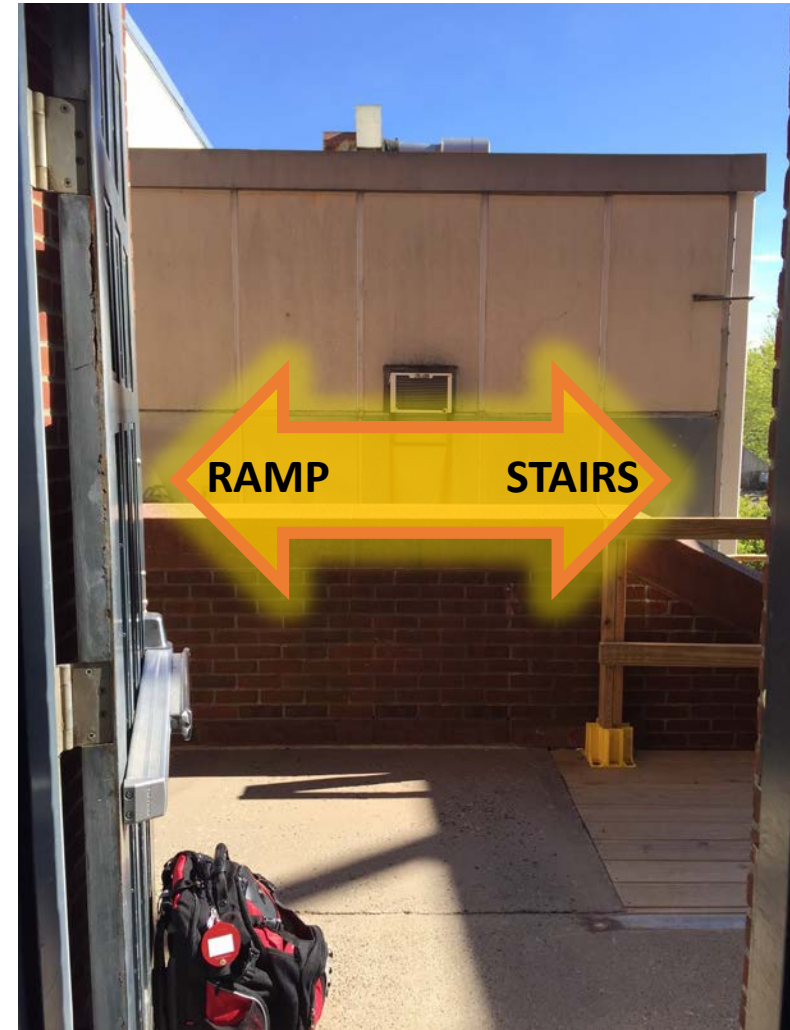




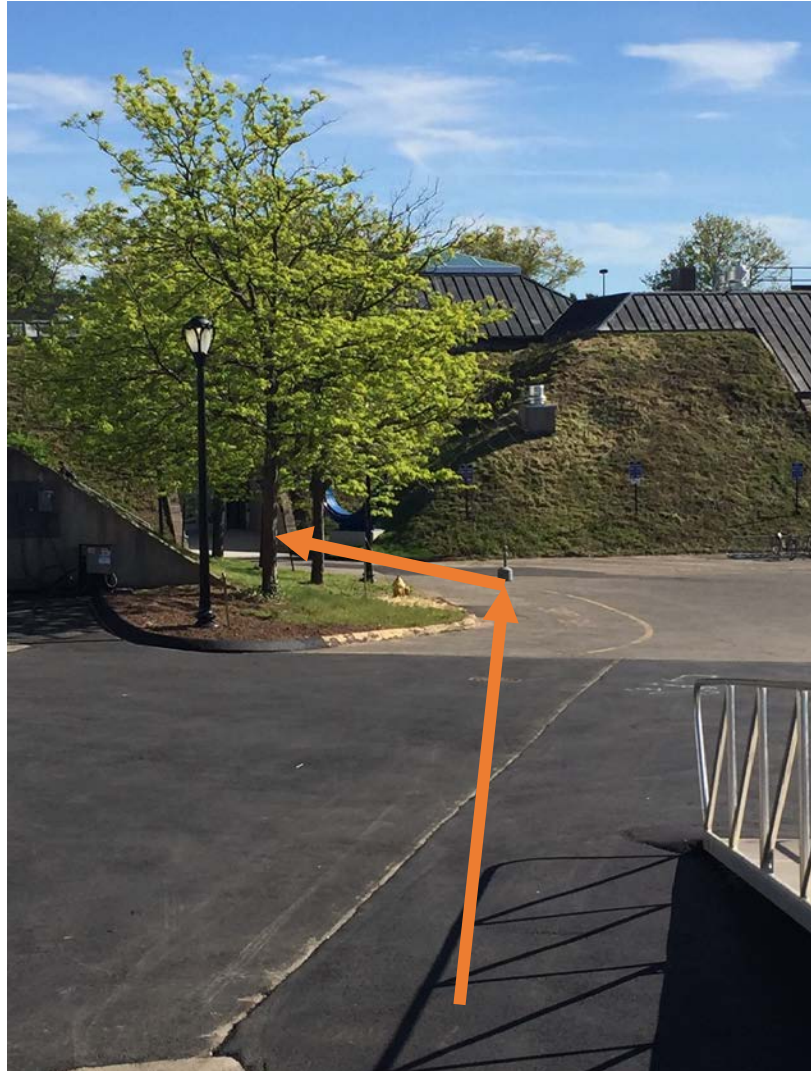
## Exit Bass Building



Use ramp (to left) or stairs (to right) to reach driveway level



To Wright Lab (main entrance)



# Welcome to Yale Wright Lab!





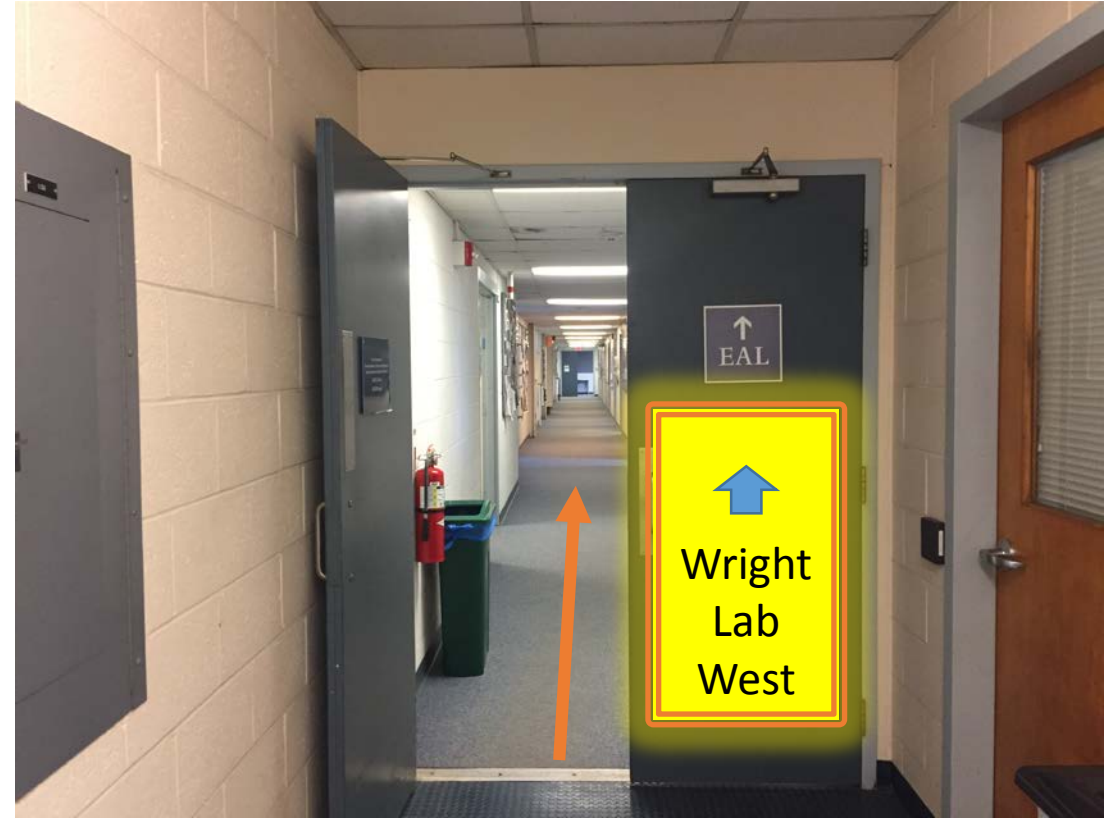
# To Wright Lab West and EAL

(with inside continuation to Wright Lab)

**The entrance to Wright Lab West/EAL is on the LEFT**



Once inside, turn RIGHT and STRAIGHT into Wright Lab West



Continue down hallway to access EAL through double doors





**Continue through second set of double doors into EAL**



**To access Wright Lab, continue down hallway and turn RIGHT**



Continue up stairs and through door to Wright Lab

