

Yale Physics Graduate Program



physics.yale.edu

Yale *Physics*

Yale Physics Graduate Program

represented here by



Prof. Sarah Demers



Prof. Reina Maruyama



Prof. Karsten Heeger
Chair



Kelly Backes (Year 4)



Sohan Vartak (Year 4)

Yale Physics by the Numbers 2019

People

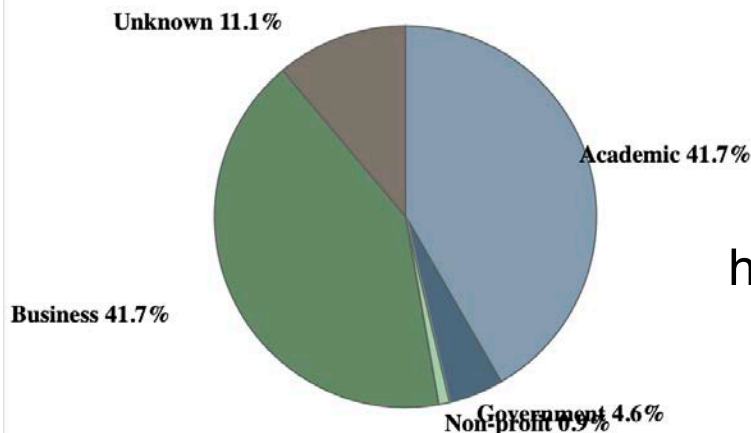
faculty (primary)	35
faculty (secondary)	16
research scientists	25
postdocs	31
grad students (physics)	133

Physics students have diverse interests

- applied physics
- astronomy
- bio
- engineering
- medical

Employment after graduation

seeking interdisciplinary opportunities



median time to graduation 6.2 years

<https://physics.yale.edu/people/alumni>

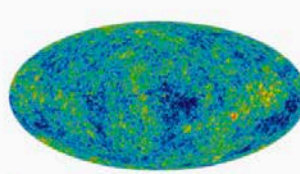
Research Areas

traditional and emerging
research areas

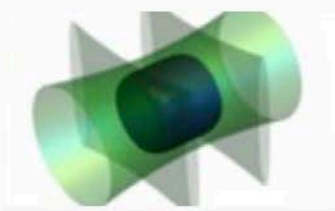
research portfolio of
department is evolving

new science initiatives on
campus

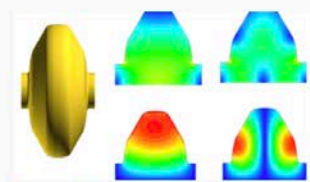
- data science
- quantum science
- instrumentation



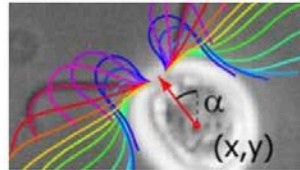
[Astrophysics](#)



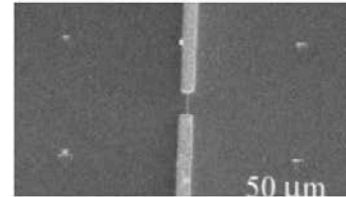
[Atomic Physics](#)



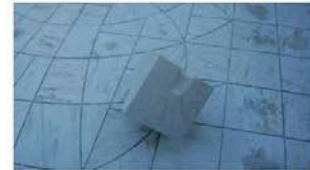
[Beam Physics](#)



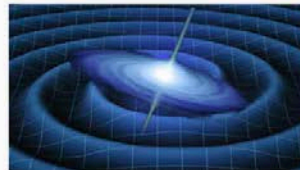
[Biophysics](#)



[Condensed Matter Physics](#)
[Experimental](#)



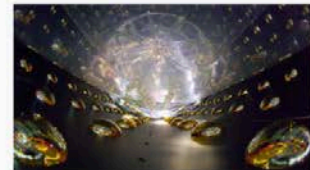
[Condensed Matter](#)
[Physics Theory](#)



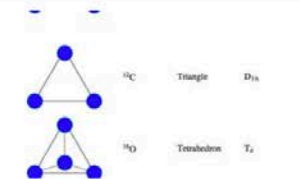
[Gravitational Physics](#)



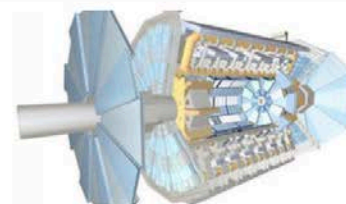
[Instrumentation](#)



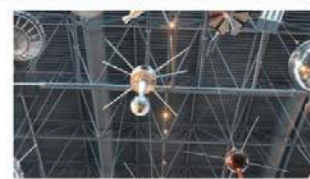
[Nuclear Physics](#)
[Experimental](#)



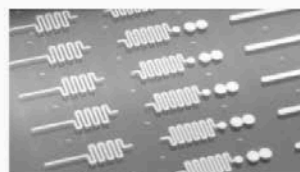
[Nuclear Physics Theory](#)



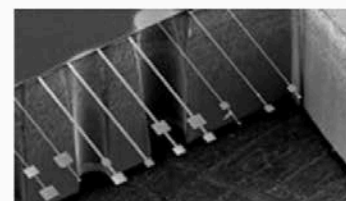
[Particle Physics Experimental](#)



[Particle Physics Theory](#)



[Quantum Information](#)
[Physics](#)



[Quantum Optics](#)

<https://physics.yale.edu/research>

Yale *Physics*

Yale Physics Research in Campus Centers



Wright
Laboratory

YCAA (Yale Center for Astronomy and Astrophysics)



Yale Quantum Institute

Quantitative Biology Institute [QBio]



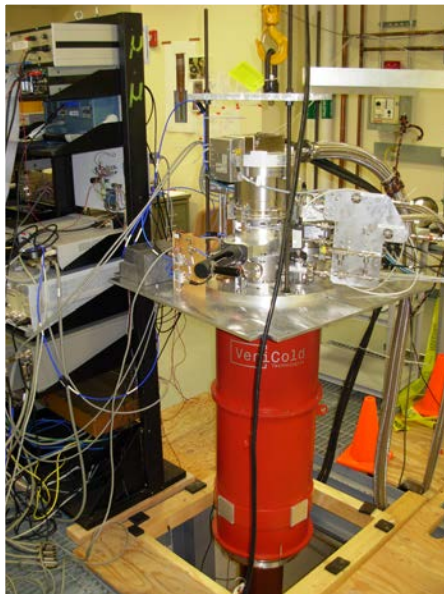
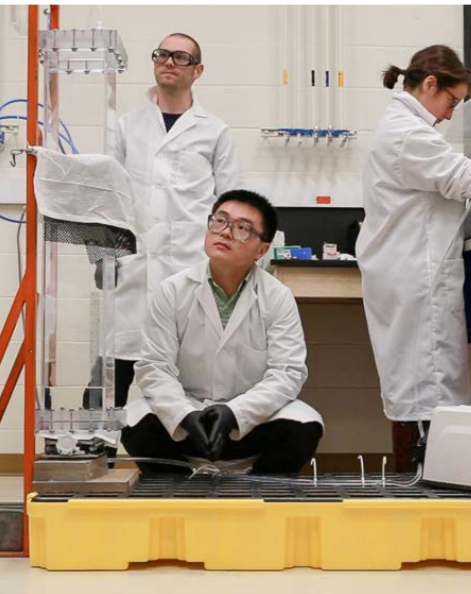
Yale's Integrated Graduate Program In
PHYSICAL and **ENGINEERING BIOLOGY**

Systems Biology Institute

Energy Science Institute



State-of-the Art Facilities



Academic Life and Campus Resources

Physics Colloquia and Seminars

Department of Physics

Home About News Research People Academics Outreach Calendar

HOME » CALENDAR

Physics Seminar
Calendar

External Seminars of
Interest

Physics Club

Prize Lectures

Physics Internal Activity
Calendar

Upcoming Month Week Day Year All Events

Upcoming Events

NOVEMBER 21, 2019

- 3:00pm [Mossman Seminar: Andreas Helset, NBI \[via Skype\], "Heavy Particle Effective Theories"](#)
- 6:00pm [NPA Seminar: Brian Beckford, University of Michigan, "Progress on the search for the elusive \$K_L \rightarrow \pi \nu \nu\$ with the KOTO Detector"](#)
- 6:00pm [Condensed Matter Seminar: Chaitanya Murthy](#)

Yale Poorvu Center for Teaching and Learning

FACULTY ▾ POSTDOCS ▾ GRADUATE STUDENTS ▾ UNDERGRADUATES ▾

Home ▾ Initiatives ▾ STEM Education and Evaluation ▾ Yale Scientific Teaching Course

Yale Scientific Teaching Course



teaching fellows
teaching certificates

Graduate Student Town Halls

regular meetings with department
leadership

setting up graduate student
advisory committee

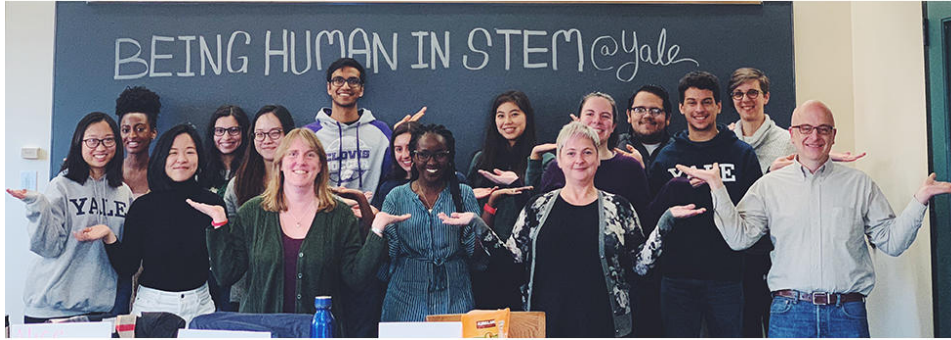
Yale Science Diplomats



outreach
advocacy

Student Groups

Climate and Diversity Committee



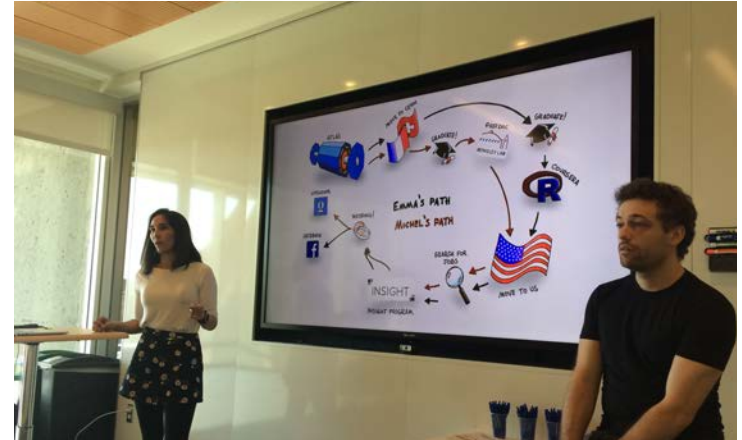
Women in Physics (+Allies)



**Women in
Physics +**

Department Happy Hour

Yale Physics Professional Development Organization

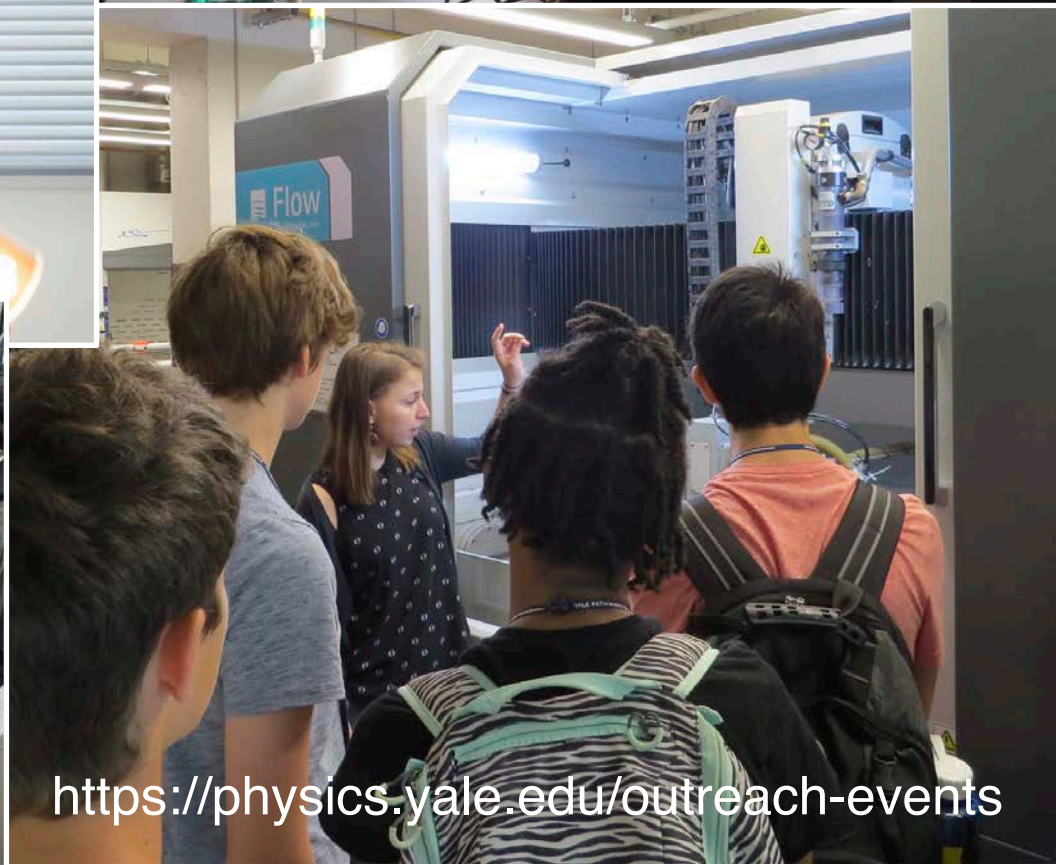


Graduate Student Assembly



Yale *Physics*

Outreach Opportunities



<https://physics.yale.edu/outreach-events>

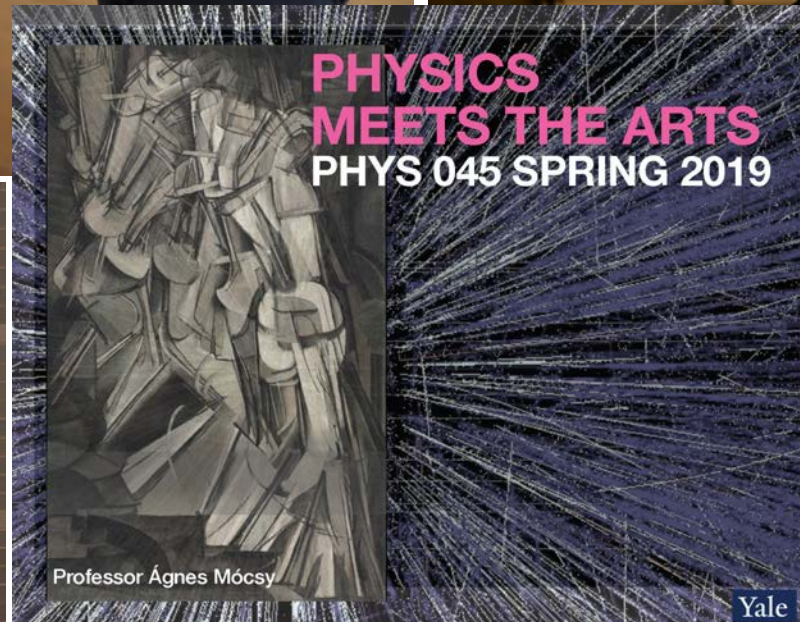
Impact Beyond the Discipline

WRIGHT LABORATORY ARTIST-IN-RESIDENCE

EMILY COATES



Agnes Mocsy
2018-2019 Presidential Visiting Fellow



Yale *Physics*

Graduate Program

- **Coursework**

- Must take or pass-out of 5 core courses, take at least one elective and a Special Investigation (research) course

- **Teaching**

- Typically, < 10hrs/week of teaching for first 2 years
- Learn to teach, deepen your knowledge of Physics

- **Qualifying Exam**

- Four 4-question tests, individual pass or fail, 2+1 tries

- **Research**

- typically, start in first year, full-time in summer after year 1
- by mutual arrangement, you can start summer before you start graduate school (early start)

- **Flexibility in program**

- many ways to personalize your course of study and research
- admission to Yale do not bind you to a specific program
- many Physics students work with faculty in other departments

Join us!



physics.yale.edu

Yale *Physics*